


The Kings Fund >

Ideas that change  
health care



Conference, meeting  
and event facilities



## Five reasons to choose The King's Fund

### **Central London location**

Based in Cavendish Square, close to Oxford Circus and the health community of Harley Street.

### **Modern facilities in an historic setting**

Our venue combines the period features of our Grade II listed Epstein Building with three newly re-furbished modern conference suites, each containing the latest in AV equipment.

### **Outstanding catering**

High quality, freshly made food tailored to your needs - from a sandwich lunch to a buffet, canapes or a silver service dinner.

### **A space for every occasion**

Our ten meeting rooms, two theatres, two traditional boardrooms and brand new 225-seat theatre and conservatory mean that we've a range of spaces to cater for your event, large or small.

### **A home for health care thinking and learning**

Visitors to our building may benefit from free access to our Information Centre, café and Friends' lounge.

## Contents

Introduction	Page 02
History	Page 03
Burdett Suite	Page 04
Conservatory	Page 06
Treasurer's Room	Page 08
President's Room	Page 10
Maynard Suite	Page 12
Marlborough Suite	Page 14
Catering for your event	Page 16
A stimulating environment	Page 18
Contact us	Page 20

## Introduction

The King's Fund is based in Cavendish Square in the heart of London's West End. Our historic building offers a range of spaces from traditional boardrooms to modern conferencing suites.

Every year, some 60,000 people attend more than 4,000 events at The King's Fund - from small meetings and seminars, to formal conferences and presentations. We also cater for special occasions - such as launches, annual general meetings, receptions and formal dinners.

As part of our commitment to creating a home for health care thinking and learning we offer special rates to any organisation involved in health and social care.



## History

The King's Fund was founded in 1897 by the Prince of Wales - who went on to become King Edward VII - to allow for the collection and distribution of funds in support of the hospitals of London. With the advent and development of the NHS, The King's Fund has evolved to meet new needs. However, the aim of the Fund remains the same - to improve health and health care.

The King's Fund moved to Cavendish Square in 1995. The site is made up of three town houses built in the late 1760s and an early 20th century extension at the rear. It has had several owners, including the Dilettanti Society, George Foster Tufnell MP, the Convent of the Holy Child of Jesus and Heythrop College, a Jesuit institution.

Many additions and changes have been made over the years, most famously a sculpture of the Madonna and Child commissioned from Jacob Epstein that is situated on the bridge that links No 12 and No 13.

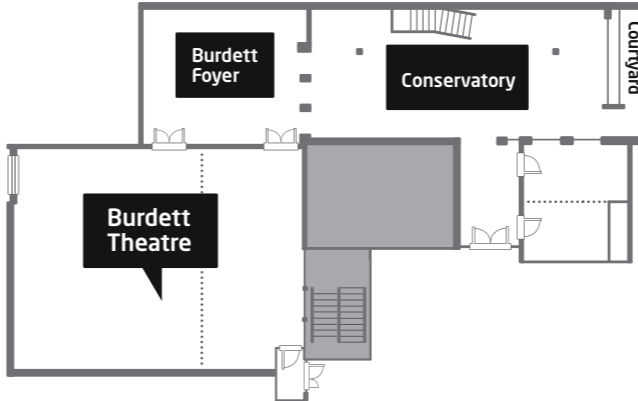




# Burdett Suite

Our brand new 225-seat conference theatre has been designed for maximum flexibility and accessibility; it can be used for a traditional conference or be adapted to host more tailored events such as an awards dinner. Audio-visual facilities include triple-screen projectors, touch-screen lectern controls and a dedicated technician.

The Burdett Suite includes organiser and speaker space, plasma screens offering branding and sponsorship opportunities, and a range of breakout spaces including our new conservatory.





## Conservatory

Our new conservatory is a unique space and offers a light and airy reception area, registration, exhibition and networking space. It can be hired as part of the Burdett Suite or separately and can also accommodate formal and informal dining, evening receptions and dinners.





## Treasurer's Room

The Treasurer's Room is located in our Grade II listed Epstein building and features a large window overlooking the courtyard and conservatory. It is ideal for board meetings, awaydays, formal dinners and receptions.





## President's Room

Located in Grade II listed Epstein building and overlooking Cavendish Square, the President's Room is ideal for board meetings, awaydays, formal dinners and receptions.

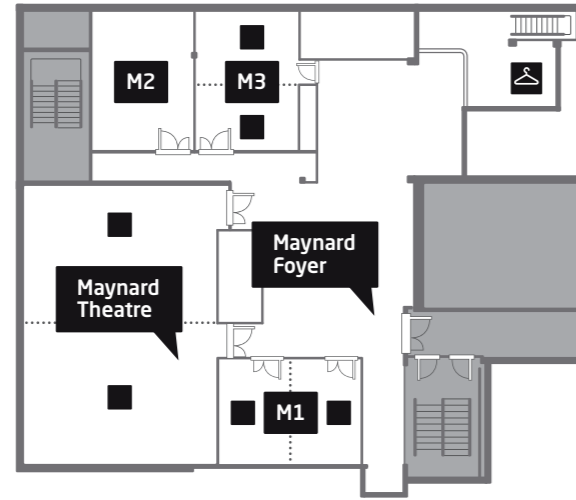




## Maynard Suite

The Maynard Suite comprises a theatre for up to 120 plus three break-out rooms for between 24-30. The rooms can be hired as a suite or separately.

A large foyer with lounge seats creates a relaxed and informal space for networking and serving food and refreshments, as well as providing an ideal area for registration.

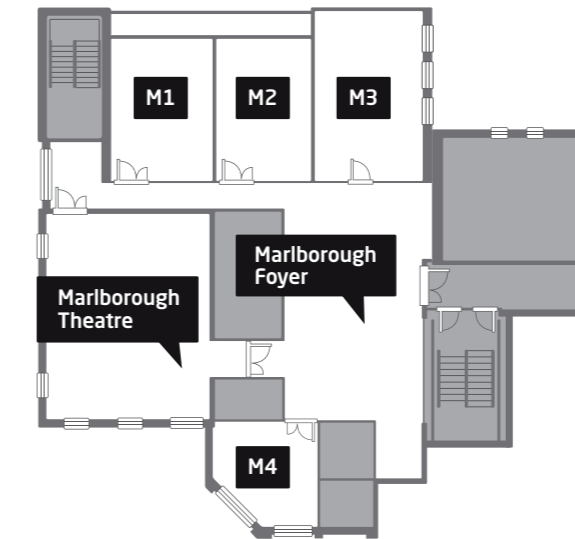




## Marlborough Suite

The Marlborough Suite comprises a theatre for up to 80, plus four break-out rooms for between 12 and 30. The theatre has dividing walls with acoustic panelling, providing the opportunity for further break-out spaces. Their rooms can be hired as a suite or separately.

A foyer with lounge seats creates a relaxed and informal space for networking and for serving food and refreshments, as well as providing an ideal area for registration.



## Catering for your event

The King's Fund offers a range of catering options in partnership with our highly regarded caterers, Chester Boyd. Whether it's an informal lunch or private dinner, our contemporary menus use locally sourced produce where ever possible.

Hospitality in the conference and event spaces ranges from canapés to buffet lunches to formal sit-down dinners. The conservatory and the foyer areas in the Maynard and Marlborough suites offer separate and relaxed catering facilities.

Our in-house restaurant is an alternative option for conference delegates, with a choice of three hot dishes alongside a fresh salad bar.





## A stimulating environment

The King's Fund provides a stimulating environment for the health and social care community to think, learn and exchange ideas, and your guests can benefit from a number of additional services.

Our Information Centre includes our health policy and management library and a team of specialists, who are happy to help with any information queries, as well as several PCs for public use.

Those working in health and social care can become a Friend of the Fund and receive exclusive access to our Friends' Lounge (shown on right), where they can meet with colleagues or work between meetings in comfortable and informal surroundings, with free access to newspapers, journals and wi-fi.

Our café is a bright and airy space open to the public. It is ideal for delegates to use if they arrive early for an event or want to continue a discussion over a coffee after the event. It can also be hired for evening functions.



## Contact us

To discuss your event requirements or arrange a site visit, call our conference services team on 020 7307 2474 or email [conference@kingsfund.org.uk](mailto:conference@kingsfund.org.uk)

You can view our facilities and take a virtual tour of our conference suites at [www.kingsfund.org.uk/venuehire](http://www.kingsfund.org.uk/venuehire)



We are located within minutes of Oxford Circus in the heart of London's West End.

### Underground

Bakerloo, Central, Jubilee or Victoria lines.

### Parking

Cavendish Square or Harley Street car parks.

The King's Fund would like to thank the following for their support in creating this brochure:

Photography : Benedict Johnson [www.benedictjohnson.com](http://www.benedictjohnson.com)  
Floral styling : Nichlas Vilsmark [www.floralsymphonies.co.uk](http://www.floralsymphonies.co.uk)  
Event lighting : Wise productions [www.wiseproductions.co.uk](http://www.wiseproductions.co.uk)  
Table dressing: Terrence Conran [www.conran.com](http://www.conran.com)  
Well Dressed Tables: [www.welldressedtables.com](http://www.welldressedtables.com)



## The King's Fund >

The King's Fund  
11-13 Cavendish Square  
London W1G 0AN  
Tel 020 7307 2400

Registered charity: 1126980  
[www.kingsfund.org.uk](http://www.kingsfund.org.uk)  
June 2009



